



# ADVANCE Microprocessor Controller



*The complete control package for trailer refrigeration that lives up to its name.*

# The Advance controller with MessageCenter. It's fully loaded with standard features.

## Upgrade to Advance™ performance, reliability, and productivity.

In today's competitive transport industry, you have to deliver the freshest product at the lowest cost. To ensure consistent product quality, and to help everyone on your team work more efficiently and more cost-effectively, you need advanced tools. Advance is that tool. It provides more information, more accurately and more simply, than conventional controllers. All to help you manage the bottom-line efficiency of your fleet.

## Exclusive firsts make Advance second to none.

The Advance hardware platform is based on proven reliable microprocessor control technology and offers many exclusive features. Advance is the only reefer control system in the industry that utilizes PC card technology for operating parameter setup, software upgrades, and data transfers, such as DataLink™ downloading. Field units can be upgraded quickly using only a PC card.

- MessageCenter™ display and keypad form a sealed interface impervious to the elements.
- UltraFresh 3™ temperature control system offers high-resolution temperature maintenance.
- FreshProtect™ programmable freeze-avoidance system is designed specifically for perishable cargo.
- Unique compressor protection logic ensures maximum reliability.
- Exclusive patented DELTEK™ diesel-electric operation, combined with the Advance controller, delivers unparalleled product protection in an energy-efficient hybrid system.

## MessageCenter keeps everyone informed. And highly efficient.

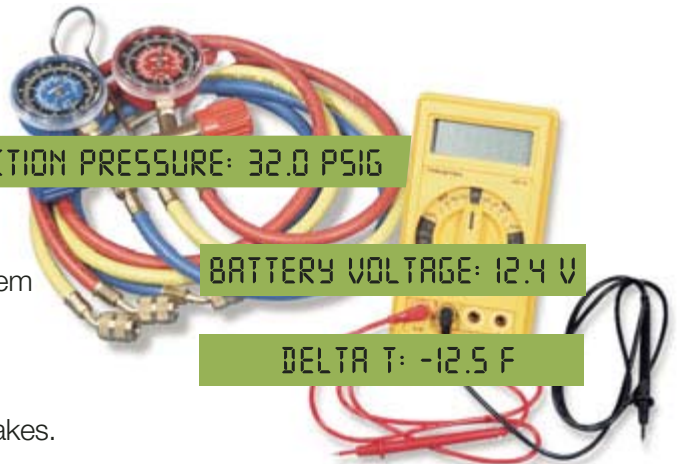
Our exclusive MessageCenter makes everyone's job easier – drivers, technicians, and operations managers alike. No other system is easier to read and set. The MessageCenter display provides a highly visible backlit display with step-by-step prompting and easy-to-understand text messaging in up to 10 languages. Advance simplicity and system feedback help reduce costly mistakes.

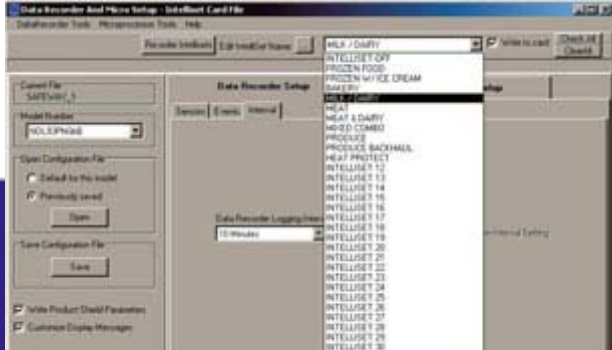


SUCTION PRESSURE: 32.0 PSIG

BATTERY VOLTAGE: 12.4 V

DELTA T: -12.5 F





FROZEN FOOD

FROZEN W/ ICE CREAM

BAKERY

MEAT AND DAIRY

**IntelliSet™ with ProductShield™ gives you 31 preprogrammed profiles.**

Carrier Transicold's IntelliSet option is the most intelligent reefer setup feature, providing simplicity, security, enhanced product protection, increased fuel economy, and decreased system wear and tear. With IntelliSet and ProductShield, you can maximize cargo shelf life as economically as possible and give drivers an easy-to-use interface.

It all starts with Carrier's ReeperManager™ PC tool. ReeperManager's IntelliSet screen allows fleet managers to create product profiles by adjusting the system's full set of operating parameters to fit the individual commodities being transported on a regular basis. Profiles are tailored to address the specific temperature maintenance requirements and desired economy settings for each individual commodity. Each profile is saved under a commodity name or any user-defined reference desired to appear on the MessageCenter display. The entire group of profiles is transferred to a configuration PC card and easily uploaded to the Advance controller.

**Data retrieval, reefer setup, software upgrades. It's all in the PC cards.**

Advance revolutionizes reefer electronics with the industry's first PCMCIA card for quick and easy data retrieval, microprocessor and DataLink configuration, software upgrades, and option activation. Slightly larger than a credit card, our exclusive PC card toolset enables technicians to complete operations in a fraction of the time, leaving the computer in the office. All you need is a shirt pocket.

The PC cards, combined with ReeperManager PC software tools, create a seamless toolset for technicians, operations managers, and fleet managers alike.

**DOWNLOAD card.**

- Downloads DataLink recorder without a PC.
- Holds data from several reefers simultaneously.
- ReeperManager can be used to transfer data to a PC.
- Erase card for reuse.

**CONFIGURATION card.**

- The ultimate fleet setup tool.
- ReeperManager PC software makes fast work of selecting settings.
- Settings are transferred to the card for fast, foolproof setup.
- Single keystroke uploads new Advance functions, configurations, DataLink parameters, and IntelliSet profiles in seconds.





The Advance controller is a powerful business tool.  
These options give you more ways



#### PROGRAM card.

- Program PC card brings fast, easy upgrades.
- ReeferManager copies new operating software to the card.
- Entire fleet can be upgraded with a single card.
- No hardware or chip changes required.

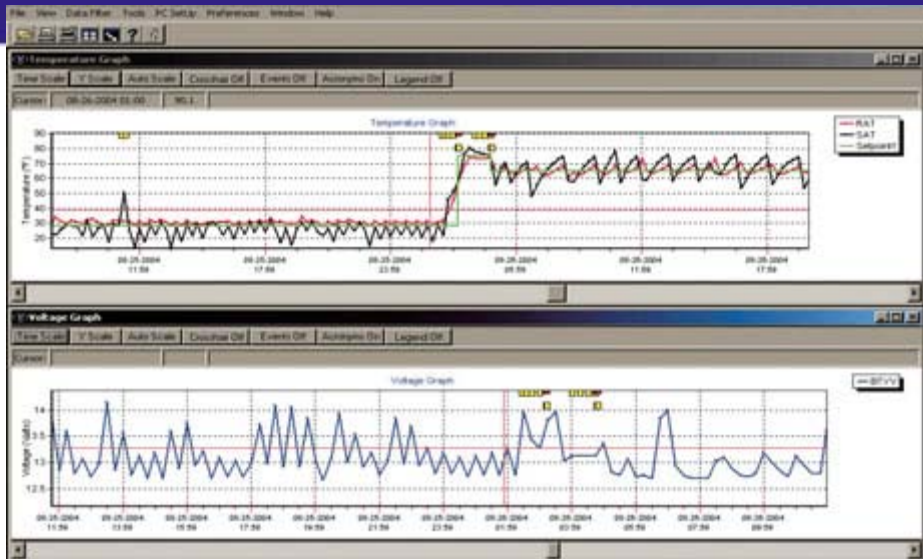
#### OPTION cards.

- Option PC card field-installs Advance options in seconds.
- Insert into the PCMCIA slot, remove when directed by the MessageCenter.
- Preprogrammed for multiple installations of your choice of options.
- Your Carrier Transicold dealer has a full list of Advance options.





to turn that power on.



**Manage your reefer fleet with ReeferManager.**

ReeferManager provides unprecedented access to vital data for tracking and evaluating system performance. Either downloading the DataLink data recorder by RS-232 or transferring downloaded data via the Download PC card, the ReeferManager report function enables you to generate and print customized graphic or tabular data reports. It even exports spreadsheet-friendly data files for fleet managers and customers. ReeferManager also provides DataLink analysis, monitoring, and programming tools so operators and technicians can maximize productivity.

ReeferManager performs all required reefer setup functions to configure your entire fleet either via RS-232 or configuration PC card. Your fleet manager can choose and configure operational settings for standard operation or program IntelliSet and ProductShield profiles to configuration PC cards. All settings are saved to files and are maintained by ReeferManager for later retrieval, which is important for maintaining a repeatable Hazard Analysis Critical Control Points (HACCP) safety standards plan.







*DataTrak offers universal connectivity with third-party communications platforms.*

**DataTrak remote monitoring and control. It's just like being there.**

Advance is the gateway to remote monitoring. DataTrak is the gateway to the Advance controller. DataTrak gives full remote monitoring flexibility; whatever the range, DataTrak has you covered. The Advance DataTrak option uses multiple communications protocols, making it ready to communicate with the latest approved Telematics systems, using satellite, cellular, short-range radio frequency (RF), and other technologies.

Advance's internal database gives your customers real-time access to all the information they need for accurate and efficient remote monitoring. Advance also has built-in two-way capabilities, which facilitate remote operation of the equipment. Functions such as setpoint change, remote defrost, clearing alarms, and reefer on/off can be controlled from remote locations. See your local Carrier Transicold dealer for approved Telematics systems providers.

**StripPrint. It prints a complete report in the palm of your hand.**

Carrier's handheld strip printer prints text and graphics using the latest thermal technology. This handheld, battery-powered unit also runs and recharges on both 12vDC vehicle power and 110vAC power. StripPrint is the fast, convenient way to document refrigeration system performance and product protection upon delivery. Your driver simply plugs the printer into the PC download port on the Advance controller. This advantage has become increasingly important as HACCP safety standards are being enacted.



# For uncommon productivity.



For added security, the integral keypad features programmable lockouts for individual or all operational settings.

- Drivers and shippers can be sure thanks to simple, familiar keystrokes.
- Technicians spend less time on maintenance and service.
- Operations managers like fleet-friendly control that simplifies training.

### **Advanced service. Thanks to Advance diagnostics.**

No other system features such a powerful combination of integral sensors, alarms, recording electronics, and software tools for analyzing and reporting operating data. Advance software logic ties complex system control algorithms to over 150 specific alarm text messages that display problems in clear detail.

Alarm diagnostics are running 100% of the time to ensure optimum refrigeration system operation and to report faults. The Advance alarm queue stores up to 16 inactive alarms that can be quickly retrieved via the dedicated "alarm list" key. This explicit alarm history, along with diagnostic and component test modes, greatly simplifies troubleshooting.

### **Pretrip easier. And get on the road faster.**

Advance conducts the most thorough pretrip inspection faster than ever, *detecting faults down to the component level*. Pretrip includes a comprehensive check of all refrigeration system components, both mechanical and electrical, including a compressor pump-down and leak check. State-of-the-art logic linked to 15 critical tests ensures that the refrigeration system is performing to your specifications. No other system gives you a more complete pretrip report.

Simple keystrokes initiate the automated pretrip sequence. The MessageCenter displays percentage of test complete and provides simple pass/fail messages when complete. Individual alarms can be viewed using the alarm key. Best of all, pretrip is fast. It provides confirmation of load protection in eight minutes, on average. Bottom line, increased productivity reduces troubleshooting and service time, reducing service costs.

### **Our exclusive built-in DataLink trip recorder backs you up.**

Just like the black box on an airplane, the Advance built-in DataLink data recorder is fully programmable to record modes of operation, sensor values, alarms, door openings, defrost, system settings, and more. DataLink not only provides comprehensive operating history to aid technicians and operations managers, but also provides detailed proof of temperature maintenance for printed delivery tickets, HACCP plan reporting, and load-claim aversion.





# Advance makes everyone's job easier. Because everyone can work smarter.

Advance keeps everyone in the loop with fast, accurate, easy-to-understand information in up to 10 languages. That's what makes Carrier's Advance control system with MessageCenter, ReeferManager, and PC card technology so easy to work with. For the driver, Advance eliminates costly mistakes. For the service technician, Advance saves historical alarm messages; provides comprehensive pretrip, diagnostic, and component test modes; and, along with ReeferManager and PC card toolset, streamlines repairs and upgrades.

For the operations manager, Advance stores, downloads, and transfers detailed performance data quickly and easily using a PC card, and ReeferManager produces customized reports. And for the fleet owner, Advance ensures peak product protection, reduced operating costs, and increased profitability. Quite simply, Advance tells everyone exactly what they need to know. Right now.

## DRIVERS AND SHIPPERS

- Multilanguage MessageCenter.
- Programmable keypad lockouts.
- IntelliSet profiles.
- Simple logical screen layout.
- Graphics strip printer.

## SERVICE TECHNICIANS

- Advanced pretrip.
- Pinpoint diagnostics.
- Stored alarm history.
- DataLink downloads.
- PC card toolset.
- ReeferManager PC tools.

## OPERATIONS MANAGERS

- DataLink trip history.
- Fast PC card downloads.
- ReeferManager fleet tools.
- Eight programmable hourmeters.
- Fast upgrades.

## FLEET OWNERS

- Increased reliability.
- Enhanced product protection.
- Lower maintenance costs.
- Reduced operational costs.
- Streamlined training.
- Fleet-friendly.
- Improved bottom line.



**North America**  
Carrier Transcold  
700 Olympic Drive  
Athens, GA 30601 USA  
Tel: 706-357-7223  
Fax: 706-355-5435

**Mexico and  
Central America**  
Ejercito Nacional No. 418  
Piso 9, Torre Yumal  
Col. Chapultepec Morales  
11570 Mexico, D.F.  
Tel: (5255) 9126-0300  
Fax: (5255) 9126-0383



**Carrier**

A United Technologies Company

Carrier Refrigeration  
Carrier Transcold  
Truck/Trailer North America  
P.O. Box 4805  
Syracuse, NY 13221 USA

[www.trucktrailer.carrier.com](http://www.trucktrailer.carrier.com)

